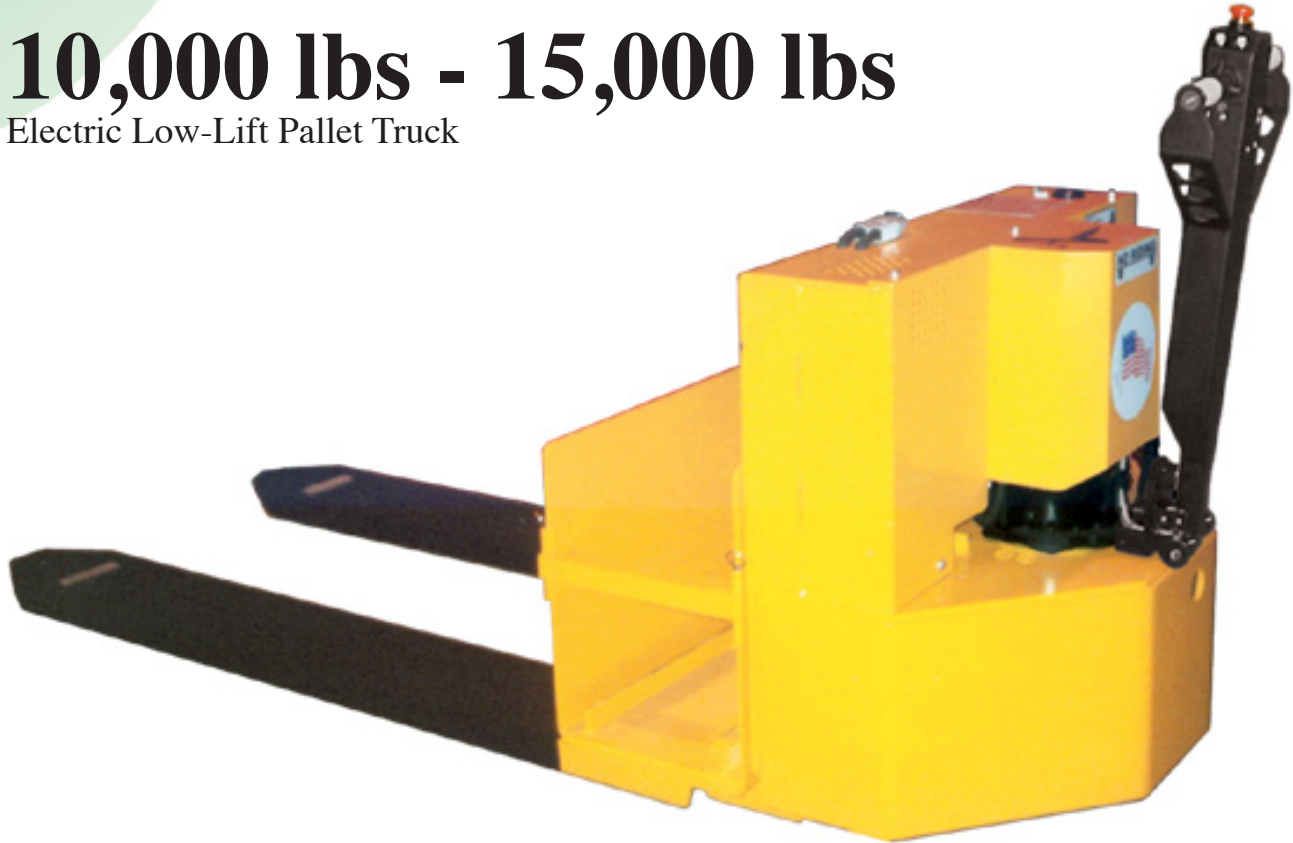




srokaTM
MATERIAL HANDLING

LWP TRUCKS

10,000 lbs - 15,000 lbs
Electric Low-Lift Pallet Truck



LWP-100E shown

Standard Features

- Electromagnetic Braking System
- Horn and Key Switch
- Safety Lockout Brake
- Manual Tiller Steering
- Rubber Tire and Poly Load Wheels
- Class H insulated Drive Motor
- Greased Pivot Joints
- Bronze Bushings

Benefits

- Low Maintenance
- Quiet Operation
- Extended Battery Life
- Smooth Acceleration
- Versatile Application



Made in the U.S.A



10,000-15,000 lbs Capacities

LWP-50E/60E/80E

Specifications

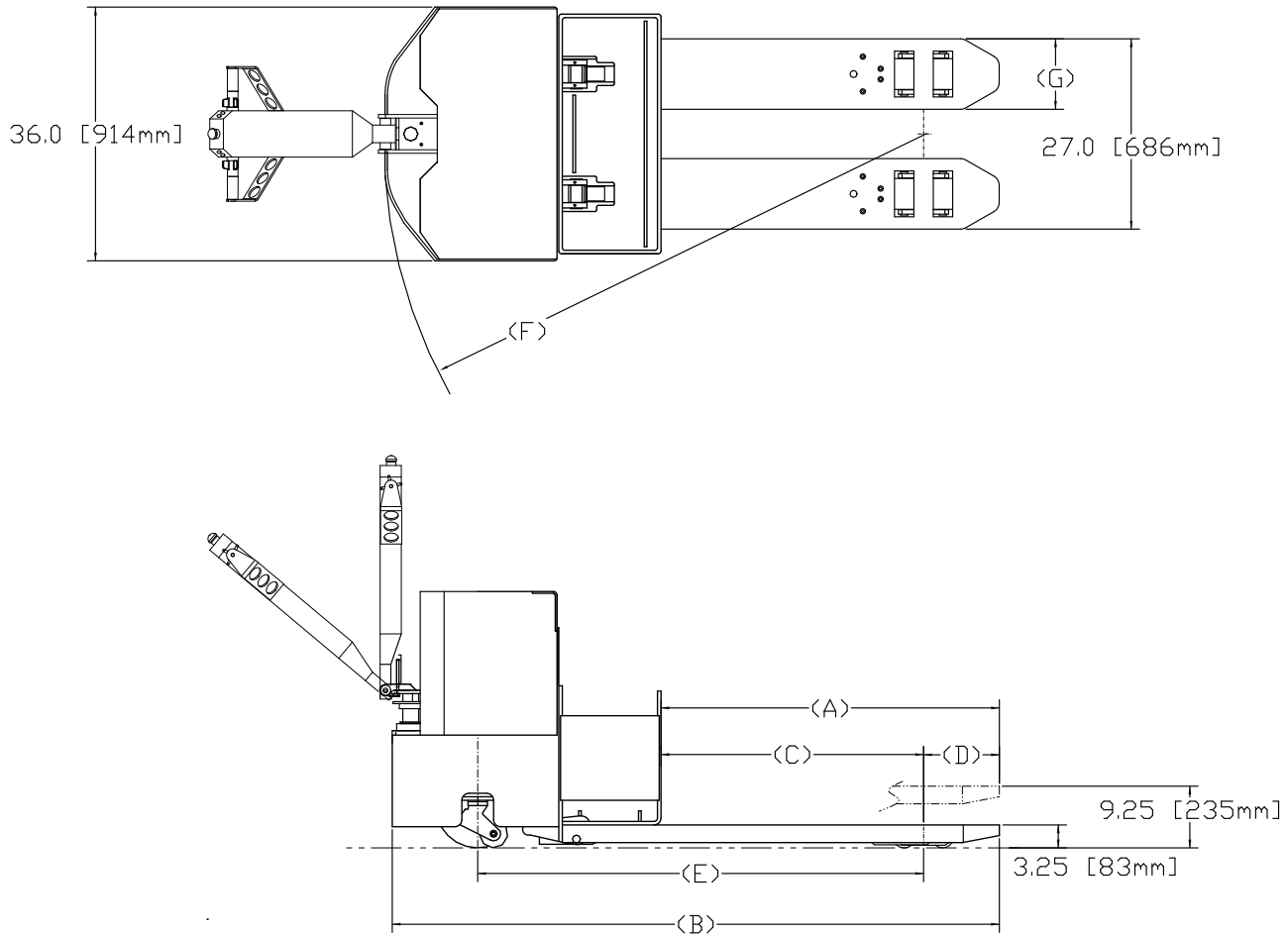
Heavy Duty Trucks

Identification	Manufacturer		Sroka Incorporation					
	Model		LWP-100E/120E/150E					
	Operator Type		walk-behind					
	Drive		Electric					
	Load Capacity	Rated	lb (kg)	10000 (4536)	12000 (5443)	15000 (6804)		
	Tire Type	Drive Tire		polyurethane				
Drive/Load (x= drive)		number	1 x / 4					
Dimensions	Overall Dimensions	Head Length	in (mm)	33.75 (857)				
	Width	Chassis	in (mm)	32.5 (826)				
	Tires	Drive Tire-dia x width	in (mm)	12 x 5 (305 x 127)				
		Load Wheels-dia x width	in (mm)	3.25 x 6 (83 x 152)				
Performance	Travel Speed	capacity	empty					
		10000	mph (kph)	3.5 (5.6)				
		12000	mph (kph)	3.5 (5.6)				
		15000	mph (kph)	3.5 (5.6)				
Battery	Battery Compartment	LxWxH	in (mm)	32 x 13.25 x 32 (813 x 337 x 813)				
	Voltage			24				
	Capacity		Amp hr	750				
	Weight	min/max	lb (kg)	800/1500 (362/680)				
	Lead Length		in (mm)	20 (508)				
	Connector	Type		SB-175-Grey				
Forks	Fork Size	Outside Spread	in (mm)	27 (686)				
	Fork Height	Raised Position	in (mm)	9.25 (235)				
		Lowered Position	in (mm)	3.25 (83)				
	Individual Fork Width		in (mm)	9 (228)	10 (254)	11 (279)		
Specifications	A	Fork Length	Nominal	in	48	60	84	96
			Actual	in (mm)	47.75 (1213)	59.75 (1518)	83.75 (2127)	95.75 (2432)
	B	Overall Truck Length	Manual Steer	in (mm)	83.3 (2116)	95.3 (2421)	119.3 (3030)	131.3 (3335)
			Power Steer	in (mm)	86.3 (2192)	98.3 (2497)	122.3 (3104)	134.3 (3411)
	C	Face of Forks to Center of load wheel	Forks Raised	in (mm)	36.5 (927)	48.5 (1232)	72.5 (1842)	84.5 (2146)
			Forks Lowered	in (mm)	40.5 (1029)	52.5 (1334)	76.5 (1943)	88.5 (2248)
	D	Center of Load Wheels to Tips of Forks	Forks Raised	in (mm)	14.0 (355)	14.0 (355)	14.0 (355)	14.0 (355)
			Forks Lowered	in (mm)	10.8 (274)	10.8 (274)	10.8 (274)	10.8 (274)
	E	Wheelbase	Forks Raised	in (mm)	62.9 (1598)	74.9 (1902)	98.9 (2512)	110.9 (2817)
			Forks Lowered	in (mm)	66.9 (1699)	78.9 (2004)	102.9 (2614)	114.8 (2916)
	F	Turning Radius	Manual Steer		76 (1930)	88 (2235)	112 (2845)	124 (3150)
			Power Steer	in (mm)	79 (2007)	91 (2311)	115 (2921)	127 (3226)
		Truck Weight		lb (kg)	1800 (816)	1900 (862)	2000 (907)	2100 (953)

Any Fork Configuration Available Upon Request



Dimensions



Heavy Duty Trucks

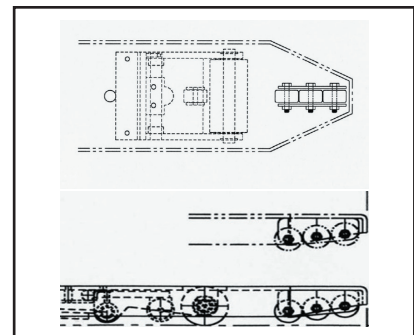
Features



Walk / Ride Option



EE and EX Classifications
Optional



Optional Easy Pallet
Entry Rollers

Technical Specifications

Engineered for Rigorous Usage

Built for all out performance and reliability the LWP Series pallet truck is designed for heavy usage in industrial, retail and warehouse settings. Fabricated using only quality components and the highest strength materials the LWP series will outlast and out perform the competition.

Frame and Chassis

The truck's frame is all seam-welded, constructed from steel plate and countoured-to-shape. Frames and assemblies are constructed of the highest quality material available and all welds are mechanically stress relieved providing you a safer material handling vehicle that is built strong, tough, and able to easily withstand the highest of tolerances.

Travel Controls

Alternate Current (AC) drive control systems are standard on LWP units. These controllers provide for step-less speed control and longer battery life.

Regenerative Braking

Energy is conserved in the battery by harnessing braking energy. This allows for longer battery life.

Steering

A full length steel control handle with hand guards is coupled to the base of the drive unit and supported by precision ball bearings. This allows the control handle to easily steer 90° to the right or left of the truck.

Operator Controls

Low mounted walkie handle with actuator grips controlling both forward and reverse speeds with a return to neutral when released. Safety button, electric push button valve control for lift and lower functions, and horn button located on handle control box.

Wheels

A 12" rubber drive tire and 3.25"x6" poly load wheels are standard. The drive wheel is stud mounted with lug nuts for easy tire removal.

Brakes

A heavy duty electromagnetic fail-safe disc brake automatically engages when the operator handle is in the full up or down position. This safety feature engages the brake and disconnects the power source.

Forks

The truck is available with single or double pallet applications with fork lengths from 48" to 144". The forks are fabricated from structural steel providing for added strength against stress and shock. If the application requires additional fork length, reinforcing bars are added to further strengthen the forks. Optional entry rollers are located at the fork tips, providing excellent entry into pallets.

Hydraulic Lift

A full 6 inches of lift is provided by a heavy duty motor, pump, and lift cylinder. This unit is mounted vertically, well protected and easy to service. The raising and lowering of the forks is actuated by controls located on the steer handle. The forks are supported by industrial bearings located in an inner carriage. Battery weight is used to lower empty forks, eliminating the need for return springs.

Drive motor

The truck is powered by a 24 volt class H, high torque motor.

Lubrication

All moving components are equipped with high pressure grease fittings for easy maintenance and extended truck performance.

Paint

High performance polyurethane coating is rust inhibiting and resists marks, chips, and weather.

Optional LCD Display

Shows vehicle status and fault code in an easy to read display. Display contains BDI and hourmeter.

Maintenance

All internal components are easily accessible for quick maintenance. Plug-in electronic handset for quick diagnostic readings to maximise troubleshooting efficiency and reduce overall maintenance time.

ANSI and UL Classification

Standard truck meet or exceed all mandatory application requirements of ANSI B56.1 Standards for powered industrial trucks. The truck also meets Underwriter's Laboratories fire and electrical shock hazard requirements for "E" classification, "EE" and "EX" models are optional.

Standard Features

- Class H Insulated AC Drive Motor
- Built to ANSI/UL-583 Specifications
- 180° Turning Radius
- Standard Lift: 6"
- Standard Fork Length: 48"
- Standard Fork O.D. width: 27"
- Speed: Approx. 3.3 MPH (empty)
- 12 or 24 Volt DC System/AC System
- Electromagnetic Braking System
- Solid State Drive Control System
- Horn and Key Switch
- Vertically Mounted Gear Drive
- Electrical Valve Control and Safety Switch
- Rubber Tire and Poly Load Wheels
- SB-175 Gray Battery Connector
- Safety Lockout Brake
- Manual Tiller Steering

Optional Features

- Hour meter
- BDI w/ Hour Meter
- BDI w/ Hour Meter and Lift Interrupt
- Battery Compartment Rollers
- 4"x2" Swivel Casters
- Battery/Charger/Power Pack
- Custom Fork Lengths and Widths
- Custom Paint Color
- Optional Pallet Entry Rollers

Environmentally Friendly Material Handling Products



Photos may or may not include optional

Note: Vehicle performances may vary due to motor and system efficiency tolerances. The performance depicted represents nominal values obtained under typical operating conditions. As a result of Sroka Advance Vehicle policy of continuing to improve it's product; materials, colors, equipment and specifications could change without notice.

Printed in the U.S.A



SAV-LWP 1006

Sroka Incorporated
Strongsville, OH 44149 USA
mail@srokausa.com
Tel 440.572.2811
Fax 440.572.1525
srokausa.com